

高端液压机电系统解决方案&专业维修服务
High-quality Hydraulic M&E System Solution & Professional Repair Service

上海福赫机电设备有限公司
Shanghai Foch M&E Equipment Co., Ltd.

Company Introduction/ 公司介绍

上海福赫机电设备有限公司一直专注于高端液压阀、液压泵等产品的销售与维修服务，同时提供生产设备液压系统的技术咨询及维护改造服务。公司有资深的液压和电气技术工程师，并拥有专业的液压元件测试试验台。

公司成立以来，业务范围涉及钢铁冶金、有色金属、塑料制品、汽车制造、电力系统、纸业、建筑材料、工程机械及铁路养护等多个行业。良好的信誉及用心的服务为公司赢得了用户的认可与支持。

我司是中航609所授权合作伙伴，代理销售国产优质军工级别伺服阀产品。

欢迎各界朋友莅临上海福赫机电设备有限公司

FOCH is a high-tech enterprise specializing in the production, sales, maintenance and technical service of electro-hydraulic servo valves, pumps and systems. The company has a number of senior engineers specializing in hydraulic and electrical technology, with professional-grade hydraulic servo valve and pump testing center.

FOCH has been established for more than ten years and its business covers metallurgy, injection molding equipment, automobile manufacturing, paper industry, wood industry, railway maintenance equipment, power systems and so on.

Welcome to come for visit, guidance and business cooperation.



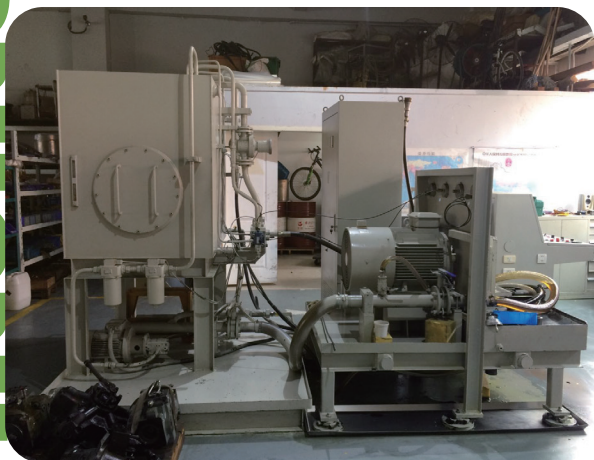
公司外景

Outside the company



中航609所 认证书

Certification of 609 institute



液压泵试验台

Hydraulic pump testing center



伺服阀试验台

Hydraulic servo valve testing center

液压机电系统集成解决方案提供者 Integrated Hydraulic System Solution Supplier

品质保证
Quality Assurance

一站式采购平台
One-stop Solution

更高性价比
High Cost-performance

减少停机时间
Reduce Down-time

依托科研院所及公司专业技术人员，福赫机电为钢铁冶金、有色金属、电力系统、工程机械等行业提供高端液压产品、电气产品、液压附件以及专业产品维修、系统设计、技术指导及服务。

Supported by college, institute and professional engineer, FOCH provides high quality hydraulic and electrical products (including hydraulic parts, electrical parts, hydraulic system accessories) and professional service (including hydraulic & Electrical product repair, system design and technical service) for Iron and Steel, Plastic, Chemical, Engineering machinery industries.



Hydraulic Parts/ 液压产品	Electrical Parts/ 机电产品	Accessories/ 附件
<ul style="list-style-type: none"> Hydraulic Pump/液压泵 Hydraulic Valves/液压阀 Hydraulic Cylinder/液压缸 Hydraulic Motor/液压马达 	<ul style="list-style-type: none"> Servomotor /伺服电机 Servo Controller /伺服控制器 VFD/变频器 Sensor/传感器 Cable & Plug/电缆及插头 	<ul style="list-style-type: none"> Filter/过滤器 Pipes and Connection/软管及接头 Sealer/密封件 Accumulator /液压蓄能器
Repair Service/ 维修及服务	System Design/ 系统设计	Others/ 其它
<ul style="list-style-type: none"> Hydraulic System Repair/液压泵阀等维修 Actuating Motor, VFD, Controller/伺服电机, 变频器, 传感器维修 Water Pump/水泵、阀维修 	<ul style="list-style-type: none"> Provide Hydraulic System design, fabrication, installation and commission by requirement/根据需求提供标准/非标液压系统设计、制造、安装及调试服务。 	<ul style="list-style-type: none"> Technical Consulting /技术咨询 Old System Improvement /旧系统升级改造 Pneumatic System Products /气动系统产品

Hydraulic Products Repair/ 液压维修

采用专业检测与维修平台及诊断分析系统，福赫为您提供液压系统(液压泵、液压马达、伺服阀等)、各种泵(离心泵、柱塞泵、真空泵等)及电机电气系统(伺服电机、伺服控制器、变频器等)的检测、评估诊断及维修解决方案，能快速及时处理您的故障，可同时减少停机时间并显著降低采购成本，具有重要经济效益。对于每台维修部件，福赫均提供质量保证，让您免除后顾之忧。

Use first-class diagnosis and reparation platform, Foch can provide hydraulic system parts (including hydraulic pumps, motor, servo-valve and so on), pump system (including centrifugal pump, vacuum pump and so on) and electrical system parts (including servomotor, servo controller, PLC, VFD) detection, evaluation, diagnosis and maintenance with quickly reparation time, which economic significance both with low cost and reduce the down time. For each repaired parts, Foch provide quality guarantee after reparation.

Repair Products/ 维修产品

液压系统组件 Hydraulic System Parts

Hydraulic pump(plunger pump, gear pump, vane pump) /液压泵 (柱塞泵、齿轮泵、叶片泵等)

Hydraulic Valves(Servo valves, proportional valves) /液压阀 (伺服阀、比例阀等)

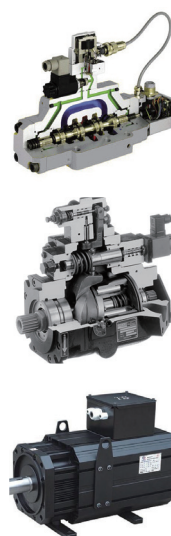
Hydraulic Motor, Cylinder /液压马达、液压缸等

其它泵类 Other Pumps

Centrifugal pump/离心泵
Plunger Pump /柱塞泵
Vacuum pump /真空泵

电气类产品 Electrical Parts

Servomotor/伺服马达
Servo controller/伺服控制器
PLC/可编程逻辑控制器
VFD/变频器



Repair Scope/ 维修内容

液压比例、伺服阀类 Hydraulic Valves Parts

- 部件更换/Parts Replacement
- 放大器更换或修复/ Amplifier Repair or replacement
- 零位偏离 (无机械对中) / Zero Position deviation
- 内泄 /Internal leakage
- 动作不稳定，卡阀/ Stroke unstable, valves block.

泵类 Pumps

- 压力不足/ Pressure not enough
- 异常声响 内部损坏/Noise inside broken
- 油温过高/ Oil temprature exceed
- 扭矩不足/Low torque

电气类产品 Electrical Parts

- 伺服马达编码器故障 /Encoder fault
- 控制器故障/ Controller falut
- 触摸屏坏点 黑屏 / HMI fault
- PLC 故障/PLC Fault
- 变频器故障 /VFD fault



Hydraulic System Products/ 液压产品

Hydraulic Pump/ 液压泵

液压泵是液压系统的动力元件，是靠发动机或电动机驱动，从液压油箱中吸入油液，形成压力油排出，送到执行元件的一种元件。

Hydraulic pump is a mechanical source of power that converts mechanical power into hydraulic energy (hydrostatic energy i.e. flow, pressure). It generates flow with enough power to overcome pressure induced by the load at the pump outlet.

Hydraulic Valves & Valves Group / 液压阀&阀组

液压阀是液压传动中用来控制液体压力、流量和方向的元件。可提供各种电液伺服阀、比例、换向、顺序等各功能阀及阀组。

Used to control pressure, flow and direction in hydraulic system. Can provide electro hydraulic servo valve, electro hydraulic proportional valve, direction reversing valve and valves group.

Hydraulic Cylinder/ 液压油缸

液压油缸是将液压能转变为机械能的、做直线往复运动（或摆动运动）的液压执行元件。

Hydraulic cylinder (also called a linear hydraulic motor) is a mechanical actuator that is used to give a unidirectional force through a unidirectional stroke.

Hydraulic Motor/ 液压马达

液压马达是液压系统的一种执行元件，其将液体压力能转变为其输出轴的机械能（转矩和转速）。

Hydraulic motor is a mechanical actuator that converts hydraulic pressure and flow into torque and angular displacement (rotation).



Hydraulic System Products/ 液压附件

Oil Filter/ 液压油过滤器

液压过滤器是能过滤液压系统中出现各种杂质，使液压系统正常工作的元件。

Oil filter is a filter designed to remove contaminants from hydraulic oil.

Hydraulic Accumulator / 液压蓄能器

蓄能器是液压气动系统中的一种能量储蓄装置，在适当的时机将系统中的能量转变为压缩能或位能储存起来并在必要时进行释放的组件。

Hydraulic accumulator is a pressure storage reservoir in which a non-compressible hydraulic fluid is held under pressure that is applied by an external source.

Pipes and Connection/ 软管及接头

Sealing ring/ 密封件



Electrical System Products/ 电气产品

Servo Motor / 伺服电机

伺服电机是一个旋转执行器或线性执行器，允许精确控制角或直线位置，速度和加速度。

Servomotor is a rotary actuator or linear actuator that allows for precise control of angular or linear position, velocity and acceleration.

Servo Controller / 伺服控制器 放大器

伺服控制器是伺服电机的一种控制器，其作用类似于变频器作用于普通交流马达，属于伺服系统的一部分，主要应用于高精度的定位系统。一般是通过位置、速度和力矩三种方式对伺服电机进行控制，实现高精度的传动系统定位。

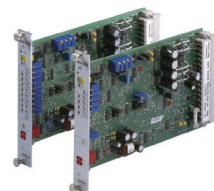
Servo developed around microcontrollers in order to reduce cost for large-volume applications.

Sensor/传感器

福赫可提供多种形式与功能的传感器，接近开关等，用于监测与测量各种速度、压力、温度、料位等用途。

Sensor is a device, module, or subsystem whose purpose is to detect events or changes in its environment and send the information to other electronics.

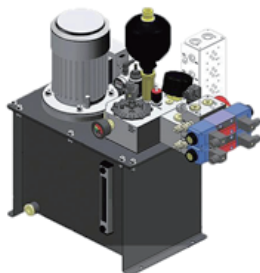
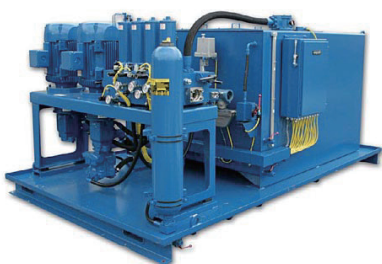
Cable and Plug/电缆及插头



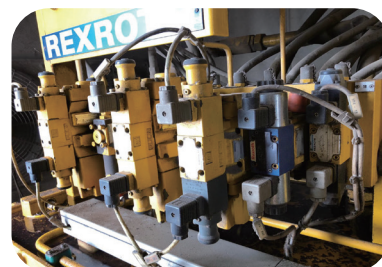
Hydraulic System/ 液压系统

福赫公司拥有经验丰富的专业技术人员，可为您提供成套液压系统设计、液压泵站组装与调试、液压系统解决方案。

With experienced and professional technical engineer, FOCH can provide hydraulic system design, fabrication, assembly and commission, turn-key solution for hydraulic system.



Hydraulic System Installation/ 液压系统安装调试



Applicable Industry/适用行业

Metal Processing 金属加工
 Non-ferrous Metallurgy / 有色金属
 Paper Industry/造纸业
 Construction Industry/建材工业
 Metal-working Machine/机床设备
 Ceramic Processing/陶瓷加工
 Rubber Processing橡胶加工
 Railway Maintenance Machine/铁路养护机械
 Power Station/火电站

.....



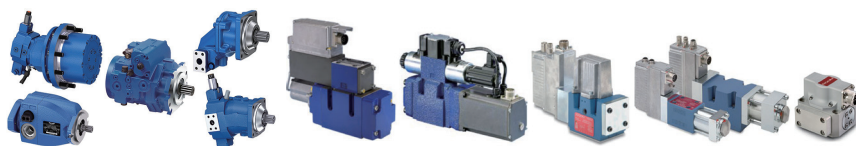
部分客户

Part of Our Customer



List at random/排名不分先后

1000+
 clients



Shanghai Foch M&E Equipment Co., Ltd.

上海福赫机电设备有限公司

Tel/电话: +86(21)24287380

Fax/传真: +86(21)24287421

Email/邮箱: info@fuhejd.com

Website/网址: www.fuhejd.com

地址: 上海市松江区江河路635号1幢1楼西侧厂房

Add: West of 1st Building, No.635 Jianghe Road,

Songjiang District, Shanghai, China

FB00020190529R2